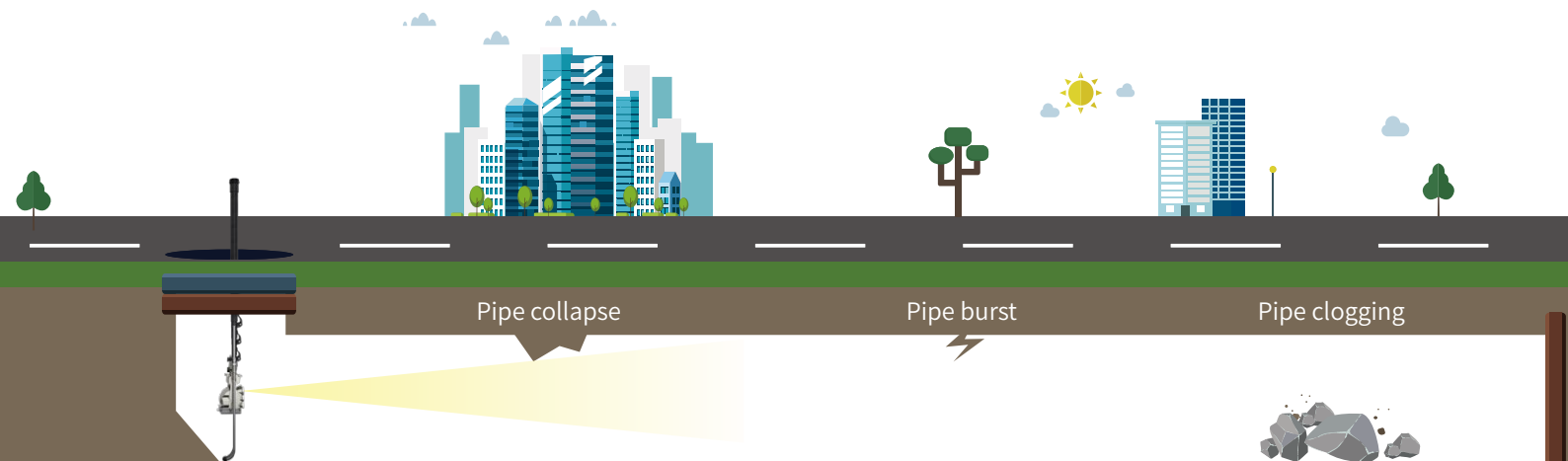
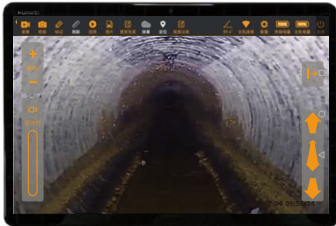


# Peek 2S-Plus

Wireless control manhole camera





## Technical Specification

Manhole camera	Deployment range	from DN150 upwards
	Communication	Wi-Fi connection
	Battery	2h/piece; 4 pieces/box
	Protection class	IP68, up to 10m water depth
	Ambient temperature range	-10~55℃
	Dimension	L150xW150xH350mm
	Weight	2.9kg (excl. bipod)
Camera	Tilt range	+20°, -90°
	Camera resolution	full HD; 2.1 Megapixels; 1920x1080P
	Optical zoom	36 X
	Digital zoom	12 X
	Illumination 1	2x18w power LED with reflector
	Illumination 2	2x10w LED for medium-range
	Illumination 3	2x3w LED for close-range
	Function	defog
Pole	Length	5m+3m extension
	Material	Carbon fiber
	Bipod length	0.8m
Laser	Measuring distance	1.5 - 100m
	Accuracy	±5mm
	Protection class	IP68
Control pad	OS	Android
	Display	10.1 inch
	Storage	64G
	Battery	8h
	Size & weight	102x153x63mm, 280g
	Communication	Bluetooth 6m
	Display information	date, time, distance, inspection video, text input, camera control